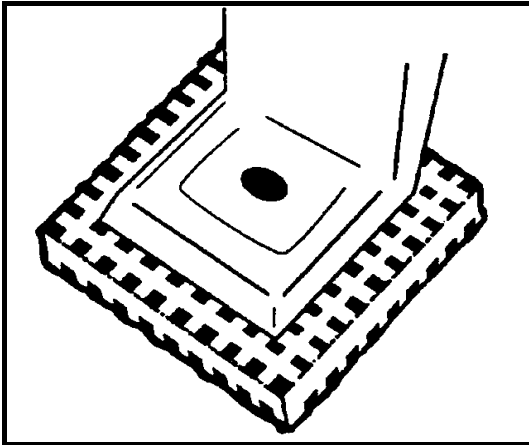
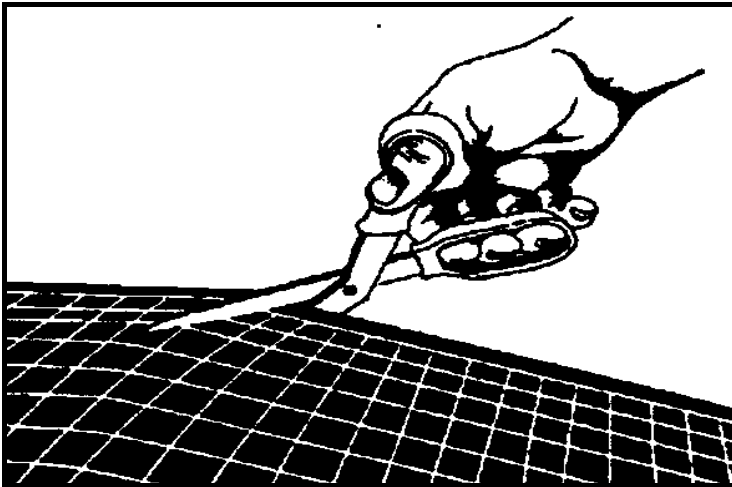


Code: Sr waffle pad

WHERE INCREASED DEFLECTION FOR A GIVEN LOAD IS REQUIRED THE WAFFLE PAD CAN BE STACKED IN LAYERS. WHERE MORE THAN TWO LAYERS ARE USED, EACH LAYER MUST BE SEPARATED BY A METAL SHIM OF 2MM THICKNESS INSERTED BETWEEN EACH LAYER. IF SEVERAL LAYERS ARE REQUIRED, THE HEIGHT OF THE STACK SHOULD BE LESS THAN THE LENGTH OR WIDTH.



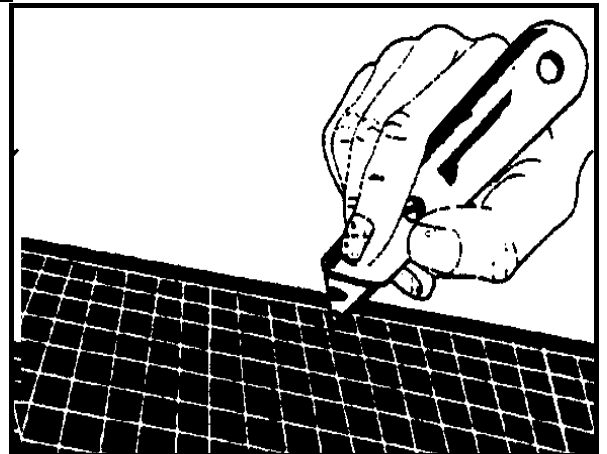
WHEN INSTALLING WAFFLE PAD AN OVER HANG OF 6MM AROUND THE FEET



THE WAFFLE PAD IS AVAILABLE IN STANDARD SIZE OF :

450MM X 450MM X 9MM

THE PAD CAN BE CUT TO ANY SIZE USING SCISSORS OR A KNIFE.



Rubber Mouldings

A
23.

INDUSTRIAL RUBBER SUPPLIES CAN HELP YOU DESIGN MOULDINGS TO YOUR EXACT SPECIFICATIONS. THE PRODUCTS TO FOLLOW ARE JUST A SMALL EXAMPLE OF WHAT WE ARE CAPABLE OF. OUR FULLY EQUIPPED TOOL ROOM ALLOWS US TO MANUFACTURE YOUR REQUIRED TOOLING. WHICH MEANS WE CAN EASILY MEET YOUR SPECIFICATIONS AND DELIVER YOUR COMPONENTS MUCH FASTER.



RMB15
15mm Buffer



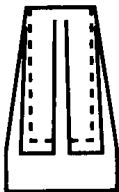
RM1
38mm Buffer



RM3
29mm Buffer



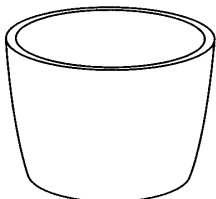
RM2
41mm Buffer



RM2016
Crutch tip



RM341
500ml Chemical jug



Conical Adaptors
RM490
19mmB x 29mmT x 25mmL
RM148
22mmB x 32mmT x 32mmL
RM645
25mmB x 38mmT x 32mmL
RM149
29mmB x 41mmT x 38mmL



RM19C
Pin buffer 14mm Dia



RM29A
Lav-seat buffer



RM747
Buffer 13mmTop x 7mmDia shank



RM935
Buffer 13mmTop x 11mm Dia shank



RM800
Small mushroom buffer



RMB215
Grommet



RMB47
Grommet



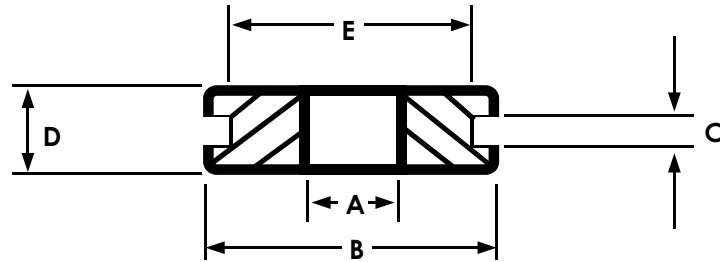
RMB12
Grommet



RM174
Lead in grommet 8mm ID

RM174A
Lead in grommet 10mmID

Rubber Grommets



Code	A	B	C	D	E	Code	A	B	C	D	E
m388	2.3	6.4	1.4	4.8	4.7	m282	6.4	14.3	.8	4	11
m27	3.2	9.5	0.8	4.8	4.8	m207	6.4	19	3.2	9.5	11
m29	3.2	8	2	6.4	4.8	a3	7.2	16	1.6	6.4	11
m33	4.8	9.5	1.2	6.4	6.4	m306	8	19.8	4	8	11
m118	3.2	11.9	1.6	6.4	6.7	m197	9.5	17.5	3.2	6.4	11
m275	3.6	11	2.4	7.2	7.2	m43	6.7	16	1.6	8	11.9
a2	5.5	11	1.6	4.8	7.2	m216	7.2	17.5	1.6	8.7	11.9
m336	2	12	1.6	6.6	8	m89	8	15	3.2	8	11.9
d1	5.5	11	.8	4	8	m92	8	15	4.8	9.5	11.9
a1	5.5	11	1.2	4	8	m364	4.75	16	13.5	21.5	12
m10	5.5	11	1.6	4.8	8	m1	8	15	1.6	8	12
m250	5.5	11	2.4	5.5	8	m351	8	17	2.8	9	12.1
m61	5.5	11	3.2	7.2	8	m256	6.4	15	1.6	8	12.7
m245	6.4	14.3	3.2	10.3	8	m297	6.4	17.5	1.6	7.2	12.7
m321	1.6	13	3.2	7.5	8.5	m113	6.4	20	1.6	7	12.7
m3211	2.4	13	3.2	7.5	8.5	a4	7.2	15	1.6	8	12.7
a154	3.2	11	.8	6.4	8.7	m23	7.2	19	3.2	11	12.7
m322	6	12.5	1.5	5.5	9	m130	7.2	16	4	9.5	12.7
m108	3.2	12.7	1.6	6.4	9.5	d4	7.5	16	1.2	7.2	12.7
m239	4	11	4.8	7.2	9.5	m13	8.7	17.5	6.4	11	12.7
m304	4.8	12.7	.8	6.4	9.5	a5	9.5	16	1.6	6.4	12.7
m119	4.8	16	.8	4.8	9.5	m123	9.5	16	1.6	6.4	12.7
m57	5.1	12.7	1.6	8	9.5	m6	9.5	17.5	2	8	12.7
m83	6	17.5	1.6	8	9.5	m56	9.5	17.5	2.4	8	12.7
m16	6.4	14.3	.8	6.4	9.5	m105	9.5	17.5	3.2	9.5	12.7
m72	6.4	14.3	3.2	6.4	9.5	m1051	1.5	17.5	2	8	12.7
m100	8.3	14.3	2	8	9.5	m198	9.5	19	3.2	8	12.7
m362	4	12.7	1.2	6.6	10.1	m3	10	17.5	1.6	8	12.7
m76	7.2	15	2.4	7.2	10.3	m248	10.3	17.8	1.2	3.2	12.7
a148	8	16	1.6	6.4	10.3	d5	11	17.5	1.2	6.4	12.7
m180	4.8	16	.8	4.8	11	m126	7.2	17.5	2	8.7	13.5

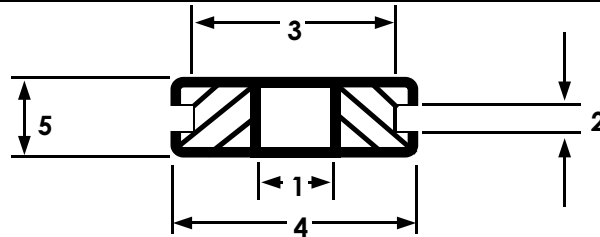
Rubber Grommets

**A
25.**

Code	A	B	C	D	E	Code	A	B	C	D	E
m17	8	20.6	4.8	11	13.5	m215	12.7	27	4.8	11	20.6
m281	8.3	18.2	1.6	8	13.5	m258	14.3	27	6.4	12.7	20.6
a10	9.50	16	1.2	6.4	13.5	m122	16	28.6	1.6	8	22
m38	9.5	18.2	4	8.7	13.5	m311	7.2	28.6	1.6	6.4	22.3
m211	11	17.5	4.8	9.5	14	m224	8	28.6	.8	7.2	22.3
u517	11	19	9.5	16	14	m226	9.5	27	2.4	8.7	22.3
m107	4.8	19	1.6	6.4	14.3	m135	12.7	28.6	1.6	6.4	22.3
m192	8	19	1.6	6.4	14.3	m312	16	25.4	1.6	8	22.3
m296	8	20.6	6.4	12.7	14.3	m14/1	16	29.3	2.4	9.5	22.3
a9	9.5	17.5	1.2	7.2	14.3	m14	16	29.3	3.2	9.5	22.3
m49	9.5	20.6	8	12.7	14.3	m285	14.3	30.2	1.6	8	23.8
m50	9.5	20.6	9.5	14.3	14.3	m191	12.7	35	1.6	8	24
m140	11	19	1.6	8	14.3	m117	19	35	1.6	8	24
m392	11.7	20	3	9.3	15.8	m129	16	31.8	1.6	8	25
m3921	6.8	20	3	9.3	15.8	m332	20	30	8	11.5	25
m121	9.5	20.6	.8	8	16	a115	16	29.4	2.4	7.2	25.4
m36	9.5	25.4	1.6	8	16	m101	22.3	31.8	1.2	7.5	25.4
m302	9.5	20.6	4.8	9.5	16	m310	12.7	35	9.5	19	25.5
m222	11	24	5.5	14.7	16	m3101	16	35	9.5	19	25.5
m223	11.9	25.4	1.6	8	16	m3102	19	35	9.5	19	25.5
m19	9.5	20.6	1.6	7.2	16.7	m260	19	33.3	1.6	8	27
m9	6.4	20.6	1.6	7.2	17.5	a116	19	31.8	2	8	27
a136	12.7	20.6	1.6	7.2	17.5	m218	19	35	9.5	16	27
m66	12.7	22.3	1.6	8	18.2	m370	19	36.5	.8	9.5	27.8
m1341	6.4	24.6	1.3	9.5	18.5	m154	19	35	.8	9.5	28.6
m286	5	25	1	7	19	m294	22.3	35	1.6	8	28.6
m236	8.7	25.4	1.6	14.3	19	a1161	19	31.8	2	8	29.5
m25	9.5	25.4	3.2	11	19	m90	18.2	38.1	5.1	11.9	30.1
m15	11	25.4	1.6	8	19	m369	12.7	38.1	1.6	6.4	31.8
m303	12.7	27	1.2	8	19	m259	25.4	38.1	1.6	8	31.8
m199	12.7	25.4	6.4	11	19	m295	28.6	41.3	1.6	8	35
m53	9.5	25.4	1.6	8	19.8	m165	31.8	68	1.6	20	44.5
a133	16	22.3	1.6	8	20.2	m252	51.6	85.7	1.6	8	61.1
m134	6.4	24.6	1.6	9.5	20.6	m329	203.2	285.7	6.35	31.7	241.3

**A
26.**

Rubber Grommets



1.		2.								3.		Dimensional	
Bore		Plate thickness and code								Plate bore		4.	5.
Code	Size	c	d	e						Code size	Code size		Add to plate thick-
4	1/8	c	d	e						8 1/4	10 1/4	7/16	5/32
5	5/32	c	d	e						8 1/4	10 5/16	7/16	5/32
6	3/16	c	d	e	g	j				8 1/4	10 1/4	7/16	5/32
7	7/32	c	d	e	g	j				12 3/8	14 7/16	9/16	5/32
8	1/4	c	d	e	g	j				12 3/8	14 7/16	9/16	5/32
9	9/32	c	d	e	g					12 3/8	14 7/16	9/16	5/32
10	5/32	c	d	e	g	j					14 7/16	9/16	5/32
12	3/8			e	g	j	n	r	z	16 1/2	18 9/16	3/4	5/32
14	7/16			e	g	j	n	r	z	16 1/2	18 9/16	3/4	5/32
16	1/2			e	g	j	n	r	z	20 5/8	24 3/4	15/16	5/32
20	5/8			e	g	j	n	r	z		24 3/4	15/16	5/32
24	3/4			e	g	j	n	r	z	28 7/8	32 1	15/16	7/32
28	7/8			e	g	j	n	r	z		32 1	15/16	7/32
32	1			e	g	j	n	r	z		40 1 1/4	15/8	7/32
36	1 1/8			e	g	j	n	r	z		40 1 1/4	15/8	7/32
40	1 1/4			e	g	j	n	r	z		48 1 1/2	2	1/4
44	1/38			e	g	j	n	r	z		48 1 1/2	2	1/4
48	1 1/2				g	j	n	r	z		56 1 3/4	2 1/2	1/4
52	1 5/8				g	j	n	r	z		56 1 3/4	2 1/2	1/4
56	1 3/4					j	n	r	z		64 2	2 7/8	1/4
60	1 7/8					j	n	r	z		64 2	2 7/8	1/4
64	2					j	n	r	z		76 2 3/8	3 3/8	1/4
96	3					j					112 3 15/32	4 1/4	5/16



AS-568 STANDARD RUBBER 'O'-RING KITS

RM4-O-RING KIT (INCH SIZE)

RM5B-O-RING KIT (METRIC SIZE)

MATERIALS:

STANDARD MATERIAL IS NBR. OTHER MATERIALS SUCH AS VITON, SILICONE, EPDM, TEFLON, RUBBER URETHANE, POLYACRYLATE ARE AVAILABLE TO SPECIAL ORDER.

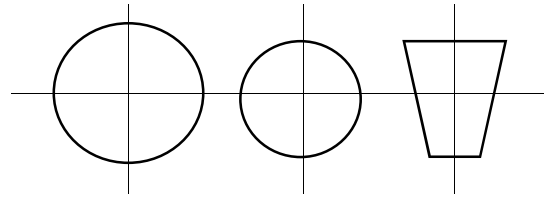
REPLACEMENT :

PACKS CONTAINING 100 O-RINGS FOR EACH SIZE ARE AVAILABLE TO REFILL INDIVIDUAL SIZES

Chemical Stoppers

STANDARD HOLE SIZE:

- 1 HOLE 6.5MM DIA. ALL SIZES.
- 2 HOLE M179 5.0MM DIA
- 2 HOLE M178 4.5MM DIA
- 2 HOLE M181 6.5MM DIA



PART NUMBER	BOTTOM DIAMETER	TOP DIAMETER	THICKNESS
M178	13mm	16mm	19mm
M178/1	13mm	16mm	19mm - 1 hole
M178/2	13mm	16mm	19mm - 2 holes
M179	16mm	19mm	19mm
M179/1	16mm	19mm	19mm - 1 hole
M179/2	16mm	19mm	19mm - 2 holes
M180	19mm	22mm	19mm
M180/1	19mm	22mm	19mm - 1 hole
M180/2	19mm	22mm	19mm - 2 holes
M181	21mm	24mm	22mm
M181/1	21mm	24mm	22mm - 1 hole
M181/2	21mm	24mm	22mm - 2 holes
M182	22mm	25mm	25mm
M182/1	22mm	25mm	25mm - 1 hole
M182/2	22mm	25mm	25mm - 2 holes
M183	25mm	29mm	25mm
M183/1	25mm	29mm	25mm - 1 hole
M183/2	25mm	29mm	25mm - 2 holes
M184	29mm	32mm	25mm
M184/1	29mm	32mm	25mm - 1 hole
M184/2	29mm	32mm	25mm - 2 holes
M185	32mm	38mm	32mm
M185/1	32mm	38mm	32mm - 1 hole
M185/2	32mm	38mm	32mm - 2 holes
M186	35mm	44mm	32mm
M186/1	35mm	44mm	32mm - 1 hole
M186/2	35mm	44mm	32mm - 2 holes
M186/3	35mm	44mm	32mm - 3 holes
M192	44mm	51mm	25mm
M192/1	44mm	51mm	25mm - 1 hole
M192/2	44mm	51mm	25mm - 2 holes
M1835	14mm	19mm	25mm

PART NUMBER	BOTTOM DIAMETER	TOP DIAMETER	THICKNESS
M849	25mm	32mm	25mm
M128	38mm	44mm	25mm
M128/1	38mm	44mm	25mm - 1 hole
M128/2	38mm	44mm	25mm - 2 holes
M129	41mm	48mm	25mm
M129/1	41mm	48mm	25mm - 1 hole
M129/2	41mm	48mm	25mm - 2 hole
M130	48mm	54mm	25mm
M193	51mm	57mm	25mm
M193/1	51mm	57mm	25mm - 1 hole 6mm di
M193/2	51mm	57mm	25mm - 2 hole 6mm di
M488	54mm	60mm	25mm
M120	57mm	63mm	25mm
M121	63mm	70mm	25mm
M122	70mm	76mm	25mm
M158	76mm	83mm	25mm
M123	94mm	100mm	25mm
M124	102mm	108mm	25mm
M1365	29mm	37mm	27mm
M243	33mm	43mm	38mm
M610	78mm	92mm	38mm
M696	83mm	89mm	38mm
M1836	17mm	24mm	44mm
M399	57mm	62mm	44mm
M398	63mm	68mm	44mm
M397	67mm	71mm	44mm
M557	32mm	44mm	51mm
M415	38mm	51mm	51mm
M415/1	38mm	51mm	51mm - 1 hole 3mm di
M798A	6mm	10mm	14mm
M1265A	9mm	12mm	15mm
M166	33mm	35mm	16mm - 2 holes 7mm di
M166A	33mm	35mm	16mm - no hole
M845	8mm	13mm	19mm
M171C	10mm	14mm	19mm
M171C/1	10mm	14mm	19mm - 1 hole
M82B	11mm	17mm	19mm
M160	10mm	16mm	22mm